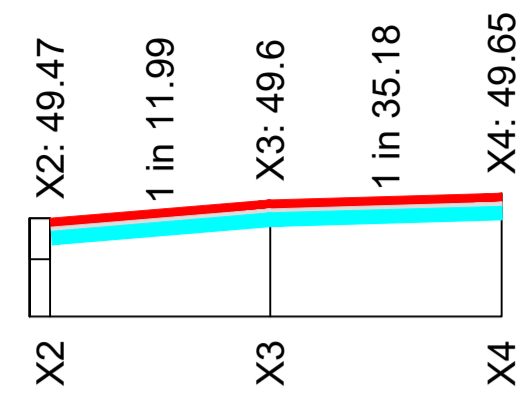
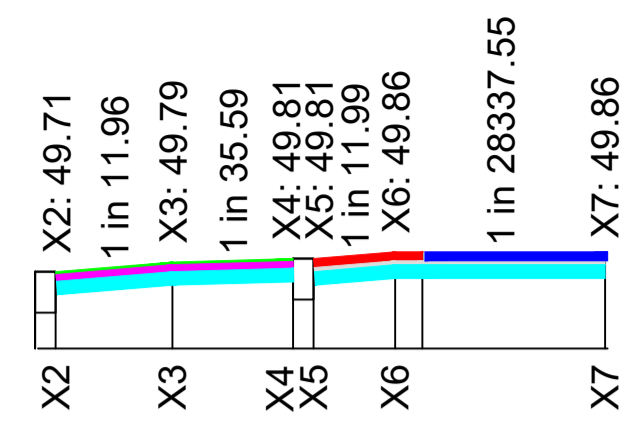


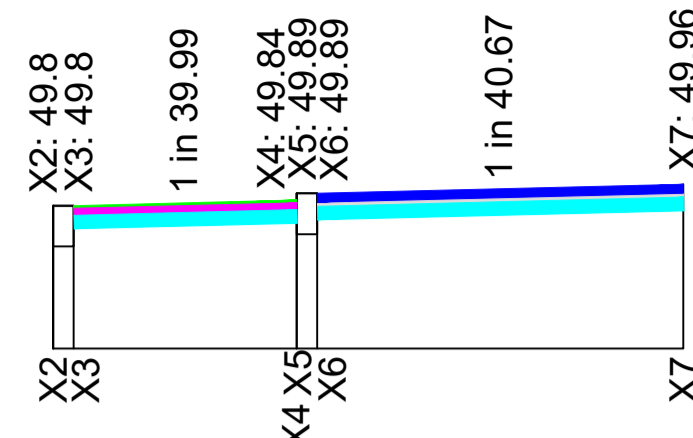
Section A-A'



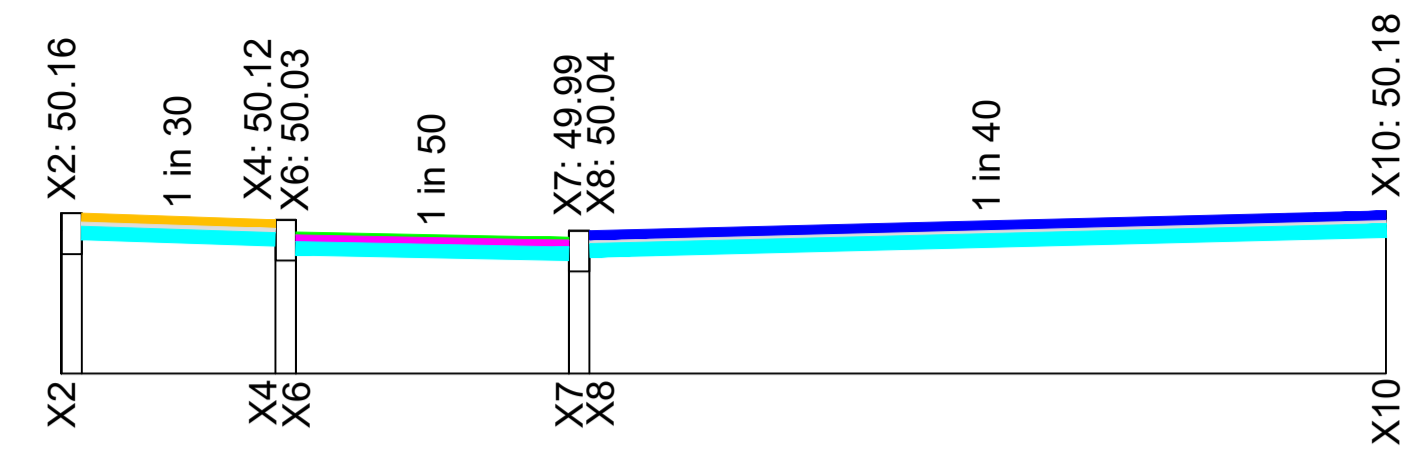
Section C-C'



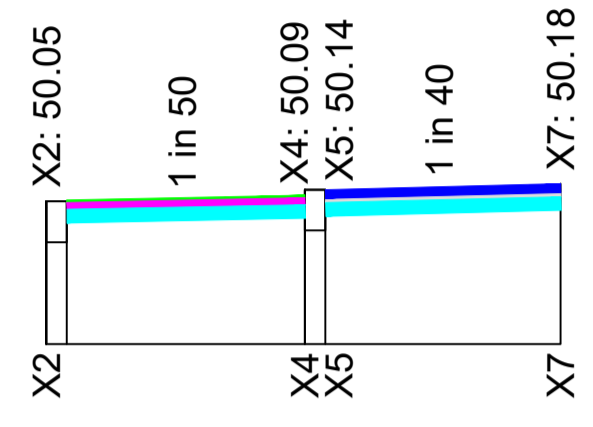
Section D-D'



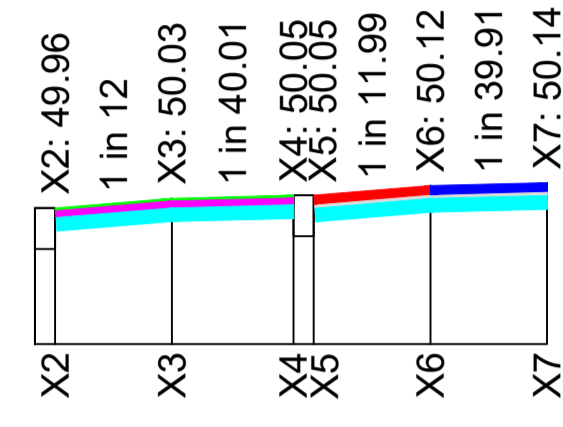
Section E-E'



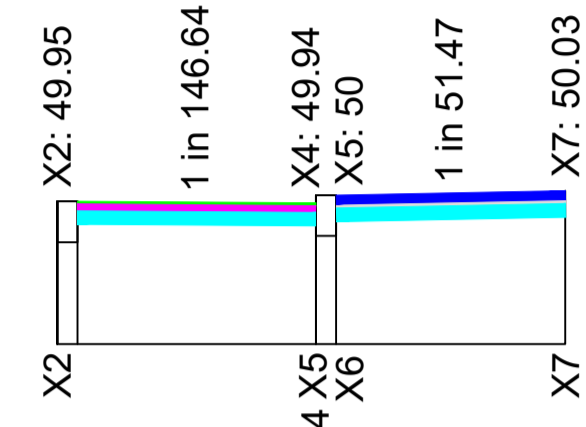
Section F-F'



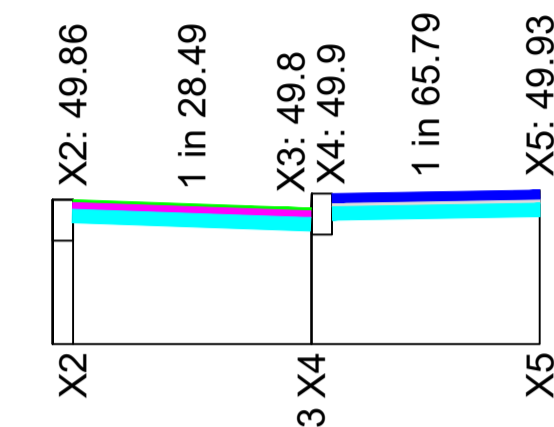
Section G-G'



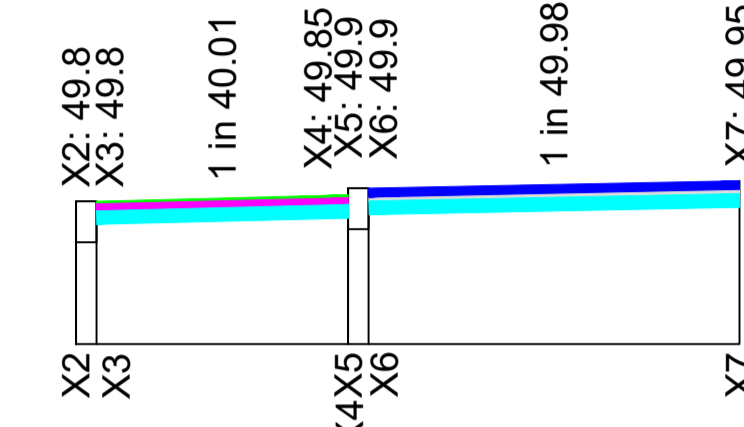
Section H-H'



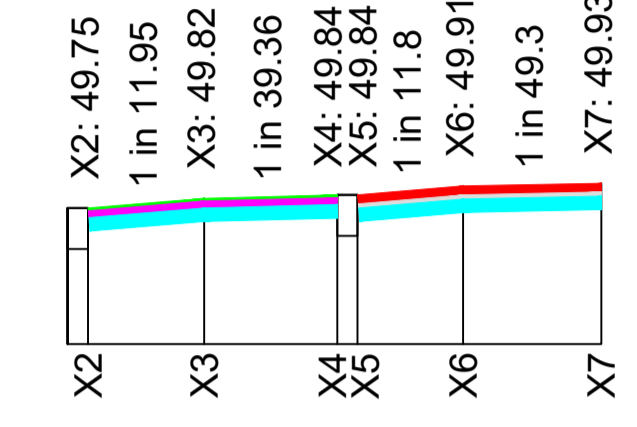
Section I-I'



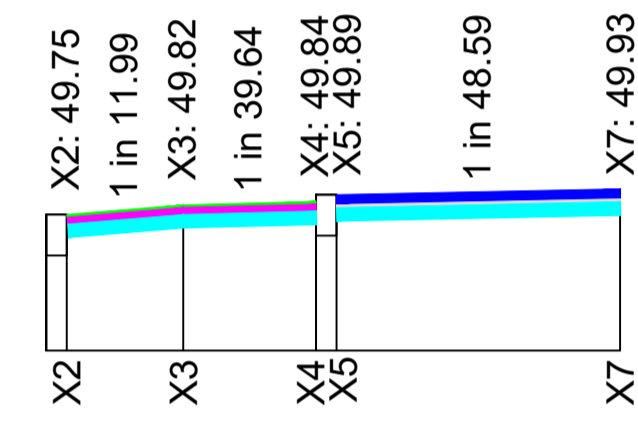
Section J-J'



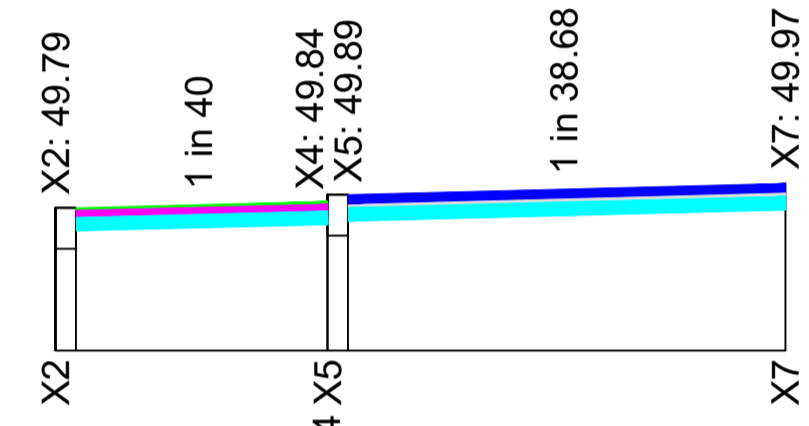
Section K-K'



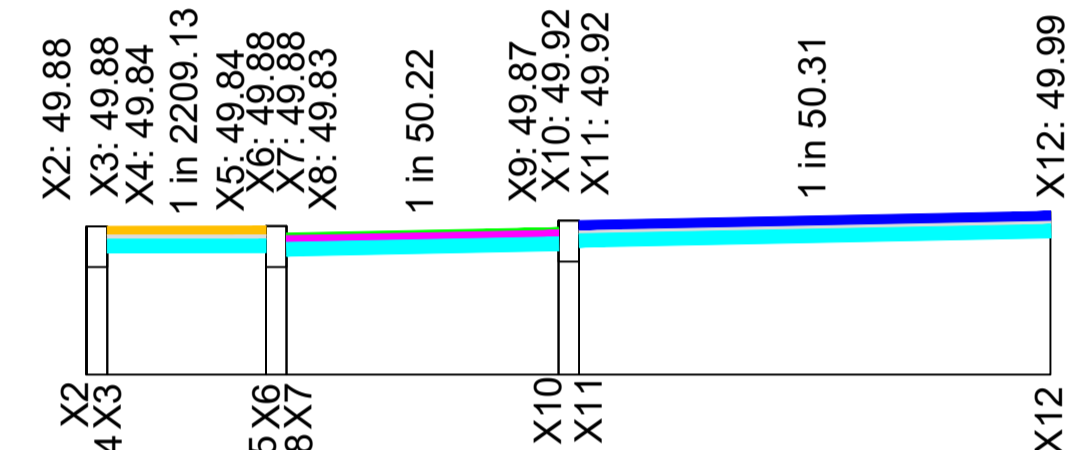
Section L-L'



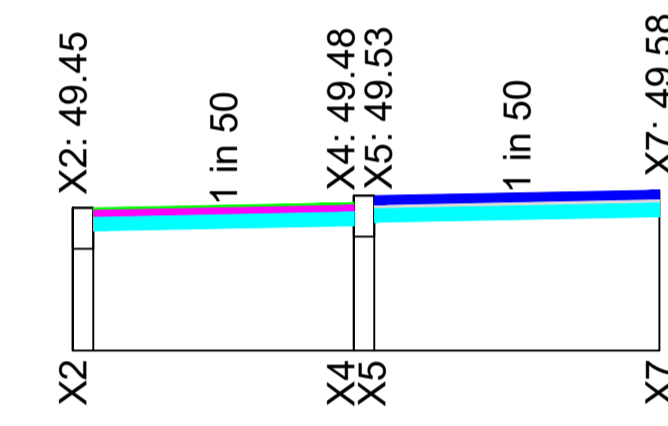
Section M-M'



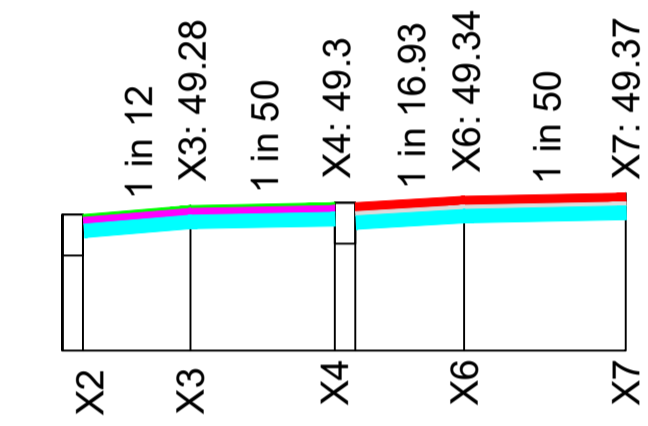
Section N-N'



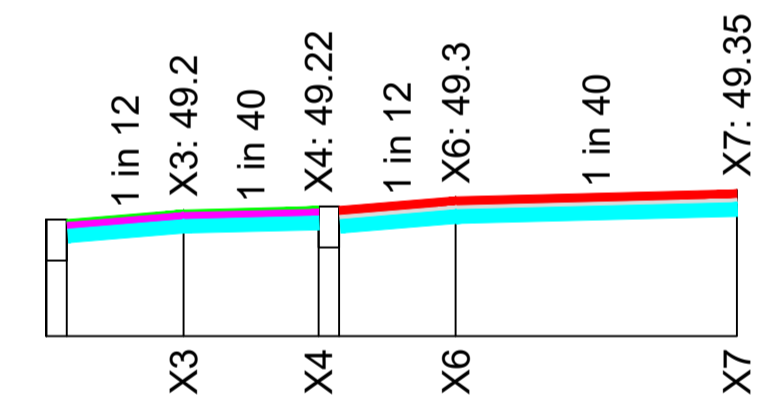
Section O-O'



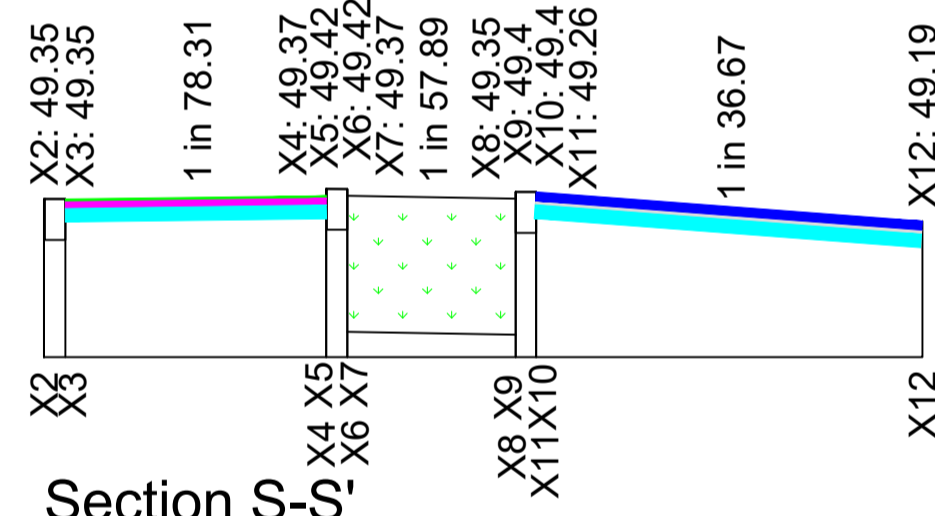
Section P-P'



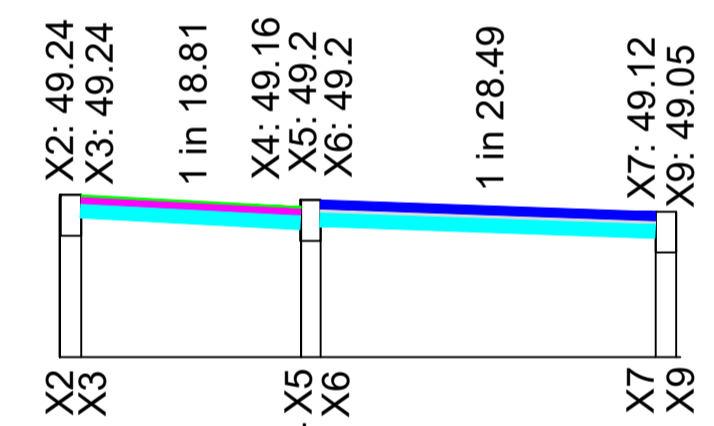
Section Q-Q'



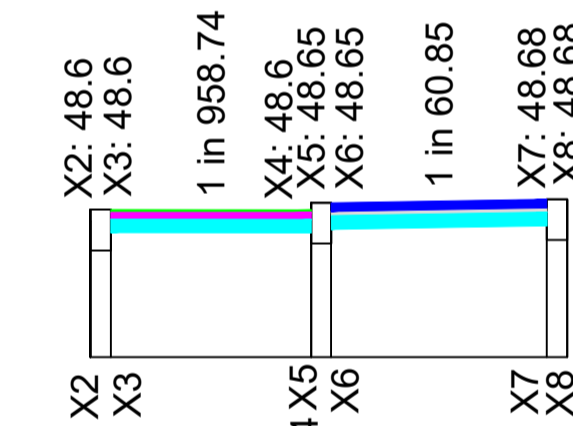
Section R-R'



Section S-S'









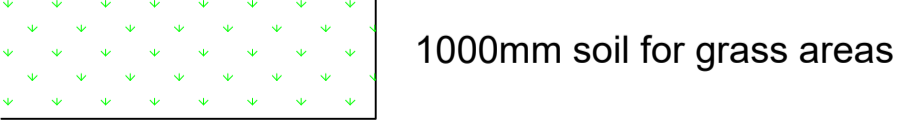


Section T-T'



Section U-U'

KEY

-  150mm x 300mm concrete kerb
-  100mm subbase
-  30mm laying course
-  50mm footway binder
-  20mm footway surface course
-  65mm tactile paving
-  65mm block paving
-  65mm modular paving
-  1000mm soil for grass areas

NO.	REV.	DATE	BY	CHKD.
1	1	12/03/2024		

Project: CHINESE ROUNDABOUT IMPROVEMENTS

Drawing Title: Footway Cross-sections

Scale: NTS @ A1

Issue Purpose: Quantities

Sheet 2 of 2

Status: Draft

Revision: 12/03/2024

14592-HAFCS



Traffic Engineering
Place Department, Environment
and Road Protection
Bromley Council Civic Centre
Stockwell Close BR1 3JH
Web: www.bromley.gov.uk
Email: traffic@bromley.gov.uk
Phone: 020 8644 3333