



COORDINATES OF CH01			
ID	OS-X (EASTING)	OS-Y (NORTHING)	R.L.
CH01	531959.38	174299.30	9.81

COORDINATES OF STATION POINTS			
ID	OS-X (EASTING)	OS-Y (NORTHING)	R.L.
ST01	531883.42	174290.76	10.61
ST02	531895.76	174285.15	10.78
ST03	531974.24	174264.66	10.63
ST04	532005.42	174297.78	9.89
ST05	531948.71	174276.64	10.61
ST06	531987.23	174224.11	10.86

TOP OF PLINTH COORDINATES AT BASE OF FENCE SUPPORT COLUMNS AS SHOWN IN FIGURE 1			
ID	OS-X (EASTING)	OS-Y (NORTHING)	R.L.
FC02	532034.08	174212.95	10.34
FC03	532032.46	174215.16	10.35
FC04	532030.84	174217.38	10.35
FC05	532029.25	174219.61	10.33
FC06	532027.65	174221.84	10.32
FC07	532026.04	174224.06	10.32
FC08	532024.44	174226.29	10.31
FC09	532022.86	174228.54	10.30
FC10	532021.29	174230.78	10.30
FC11	532019.69	174233.01	10.29
FC12	532018.07	174235.22	10.14
FC13	532016.44	174237.43	10.14
FC14	532014.78	174239.62	10.15
FC15	532013.13	174241.81	10.15
FC16	532011.45	174243.98	10.16
FC17	532009.77	174246.14	10.17
FC18	532008.06	174248.29	10.18
FC19	532006.36	174250.44	10.19
FC20	532004.63	174252.57	10.20
FC21	532002.88	174254.69	10.36
FC22	532001.11	174256.78	10.37
FC23	531999.34	174258.88	10.38
FC24	531997.58	174260.98	10.38
FC25	531995.81	174263.07	10.39
FC26	531992.30	174263.05	10.39
FC27	531985.07	174270.60	10.55
FC28	531977.85	174278.13	10.39
FC29	531978.03	174281.63	10.39
FC30	531976.04	174283.51	10.40
FC31	531974.03	174285.38	10.40
FC32	531972.03	174287.26	10.40
FC33	531970.02	174289.13	10.25
FC34	531968.02	174291.00	10.26
FC35	531966.02	174292.88	10.26
FC36	531964.01	174294.75	10.26
FC37	531962.01	174296.62	10.11
FC38	531960.01	174298.50	10.11
FC39	531959.19	174299.18	10.12

COORDINATES AT CENTRE OF FENCE GATE COLUMN BASE			
ID	OS-X (EASTING)	OS-Y (NORTHING)	R.L.
GC01			
GC02			
GC03			
GC04			
GC05			



Note: Columns are not in-line with plinth blocks. Front side of the columns is at the centre line of plinth blocks.

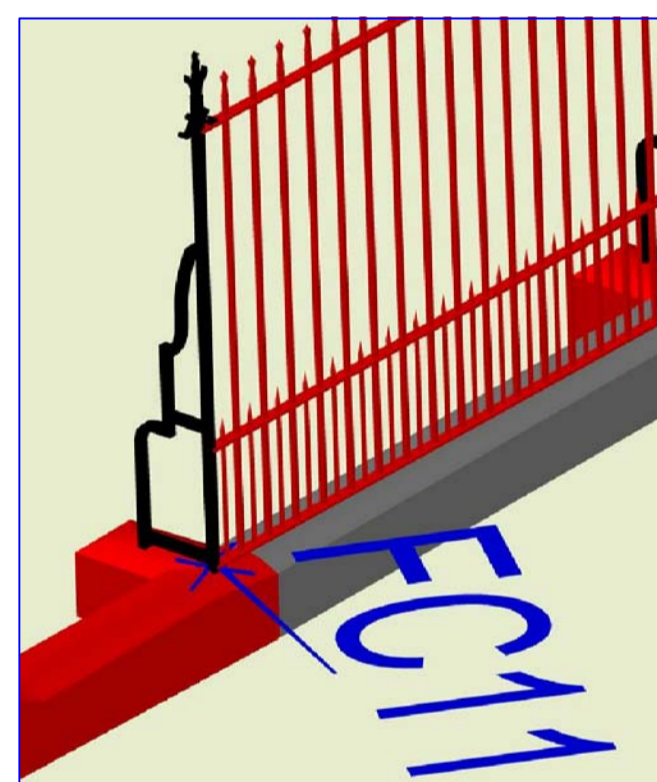


Fig. 1: FCxx Coordinates denote top of plinth at base of fence support columns

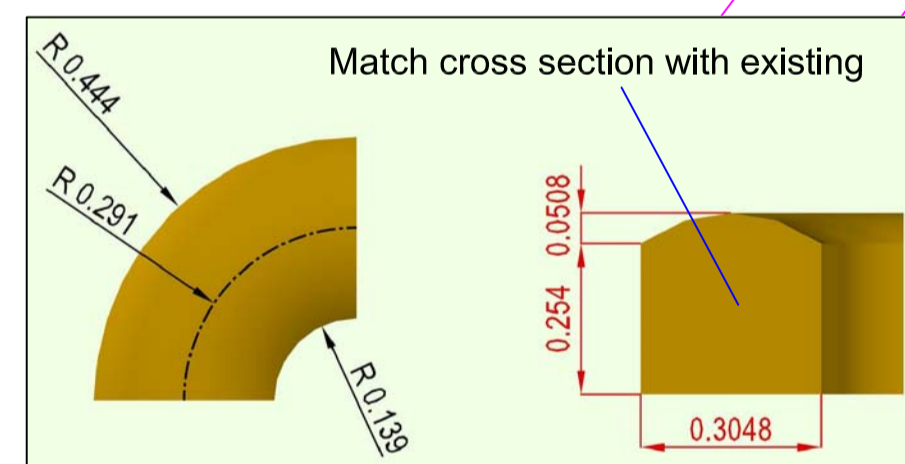


Fig. 2: Details of curved plinth block.

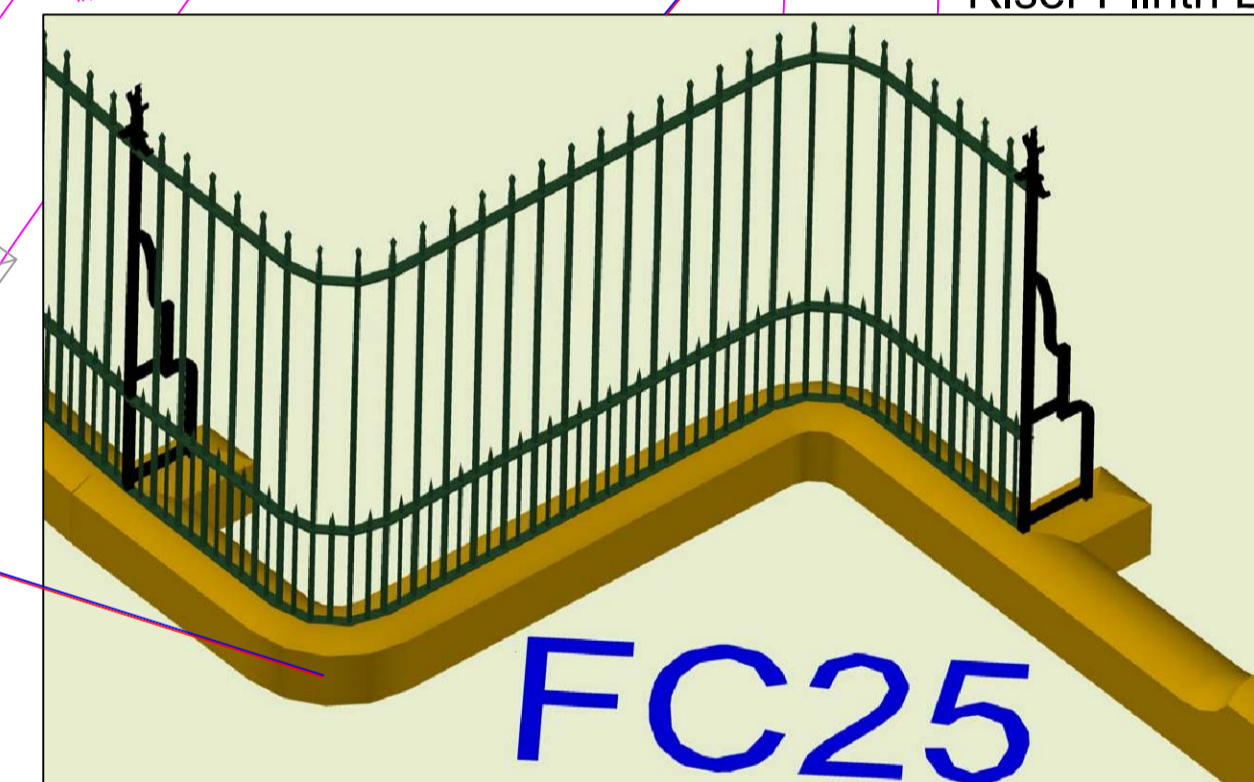
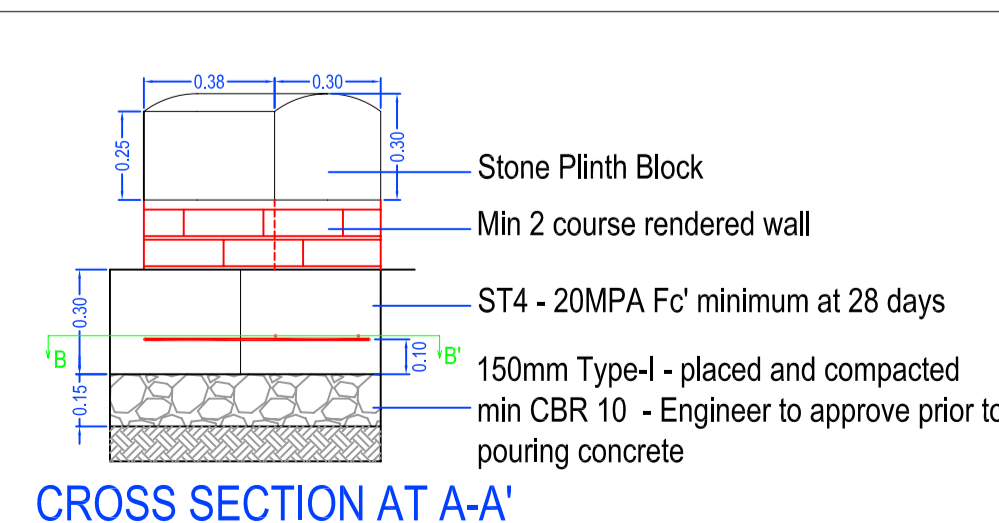
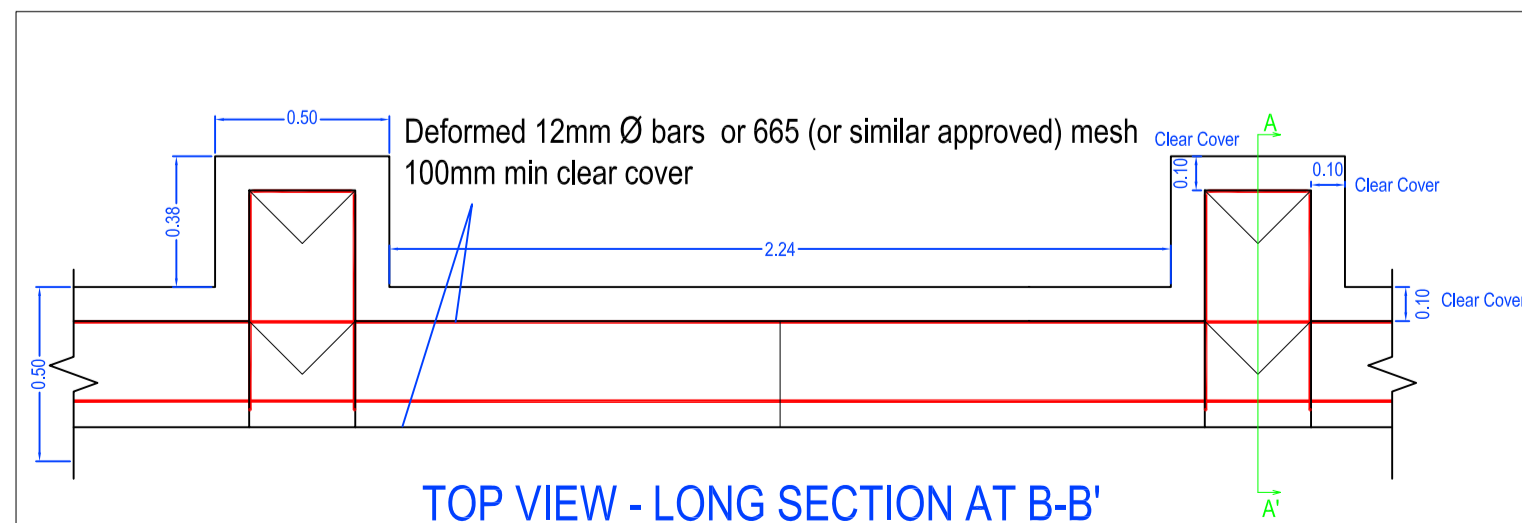


Fig. 3: New fence panel "C" with double bend at fence recess. Panel "B" is mirror image of panel "C". See drawing 1063-C-012 for panel details.

- Note:
- All coordinates and levels on this drawing are revised and supercede all previous drawings.
 - Coordinates/location for the fence columns for gates to be liaised with Chelsea Metal Works so that the gates can be closed perfectly.

- Key:
- L Lower side of Plinth Riser Block
 - H Higher side of Plinth Riser Block



REVISION	DRAWN BY/DATE	CHECKED BY/DATE	APPROVED BY/DATE
C	HA JUN 09	AB JUN 09	HT JUN 09

Based upon the Ordnance Survey mapping with the permission of the Controller of Her Majesty's Stationery Office.
 © Drawn copyright.
 Unauthorised reproduction infringes Crown Copyright and may lead to prosecution or civil proceedings. L.B. Lambeth 100019338 2008

Lambeth Transport
 Transport & Highways
 3rd Floor, Blue Star House
 234-244 Stockwell Road
 London, SW9 9SP
 020 7926 9000

Project		HERNE HILL JUNCTION IMPROVEMENTS	
Drawing Title		FENCE PLINTH SETTING OUT COORDINATES	
Purpose	SETTING OUT	Draft	Scale
Issuing Office	BLUE STAR HOUSE	Issue	NTS
Telephone	020 7926 9000	Drawing number	1063-C-001
		Version	1